



RS Simmons Co., LLC
PCB Optical Inspection

SimmScope II

Semi-Automatic Optical Inspection for PCBAs

NOW WITH
SIDE VIEW
CAMERA

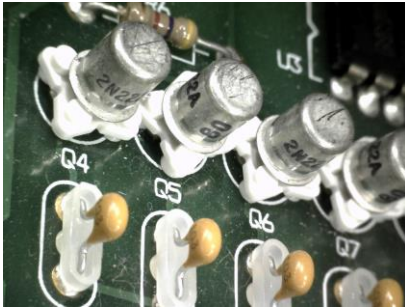


Image Captured w/Optional
Side View Camera System



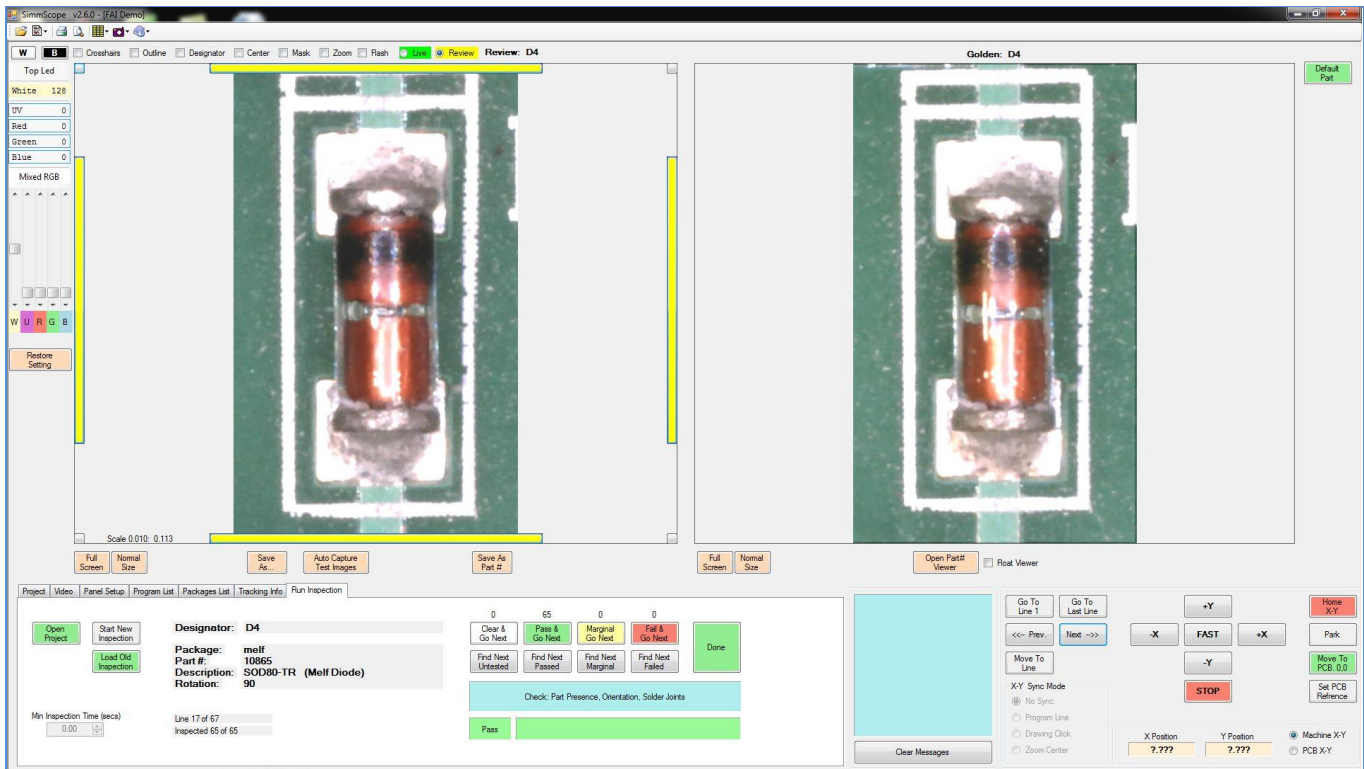
The SimmScope II is a semi-automatic optical inspection and image archiving system for printed circuit board assemblies. It significantly increases the speed and accuracy of manual visual inspections, and is a fraction of the price of a fully automated AOI. Programming can be done in a matter of minutes using the integrated Gerber, XY Placement List, and Bill of Materials import features. There is also a utility for simple matrix type scanning and inspecting of the board.

The SimmScope is perfect for:

- First Article Inspection, Assembly Line Auditing, or Low Volume 100% Inspection.
- Solder Joint and Tall Thru-hole Part Inspections.
- Final End of Line Inspection where board height is a problem for other systems.
- Use in both Pre and Post Flow Applications since the board is stationary.
- Image Capture and Archiving of Critical Inspection Areas of the PCB.
- Traceability Applications such as Military, Aerospace, Medical, and Automotive.

Description:

- The system automatically moves a digital microscope to the inspection points, sets the lighting, camera height and angle, zooms to the region of interest, and displays a live image of the inspection area.
- The Golden Board images for the area are displayed next to the live image for visual comparison by the operator. Unlike AOI, the operator makes all of the pass/fail decisions.
- For difficult inspection points, the lighting can be adjusted using the graphical interface.
- The images are automatically captured and can be stored as part of a post inspection report.
- The inspection can be done by component, by board region, or by a combination of both.
- Inspect for part presence, rotation, polarity, registration, text, solder, solder paste, bent leads, bent pins, jumpers, cut traces, or any other top down or side visual feature on the PCB



System Specifications (subject to change)

Base Model	SimmScope 1812	SimmScope 1818	SimmScope 2418
Standard Digital Microscope	Color 1.3M Pixel (1280 x 1024) 20x to 90x Adjustable Mag., 1600 to 7400 dpi, .8" to .17" FOV Top Down 8 White LED with Adjustable Polarization		
Optional Digital Microscopes	Color 5M Pixel (2592 x 1944) 20x to 90x Adjustable Mag., 3200 to 14800 dpi, .8" to .17" FOV Top Down 8 White LED with no Polarization Also Available: 1.3 or 5MP 10x to 20x Adjustable. Mag, 1.6" to .8" FOV		
Optional Lighting	Programmable White, Red, Green, Blue, and UV LED Side Lighting		
Top Clearance	Varies with Magnification Setting and Lighting (2" to 6"). Typically 3" top clearance depending on actual setup.		
Bottom Clearance	Typically 3" bottom clearance depending on the actual setup. More if needed with Mechanical Adjustment.		
Inspection Area	18" x 12"	18" x 18"	24" x 18"
Dimensions	27.5" W x 20" L 24" H	27.5" W x 26" L 24" H	33.5" W x 26" L 24" H
Side View Option	The Side View option adds oblique viewing in 8 programmable positions around each component. Programmable lighting is required (white only). Board clearance is 2" max depending on actual setup. Machine dimensions differ from above.		
Other Options	Desktop or Floor Standing, Drawer or SMEMA conveyor, Manual or Programmable Width Control		

Designed and built in the USA.

RS Simmons Co., LLC
Exton, PA USA
www.RSSimmons.com

SimmScope II
Semi-Automatic Optical Inspection
For SMT & THT Printed Circuit Board Assemblies

Ph 610-873-3402
sales@rssimmons.com